

Sander Jacobs, Maarten Stevens, Wouter Van Reeth, Toon Van Daele, Anik Schneiders, Heidi Demolder, Marijke Thoonen, Peter Van Gossum, Johan Peymen

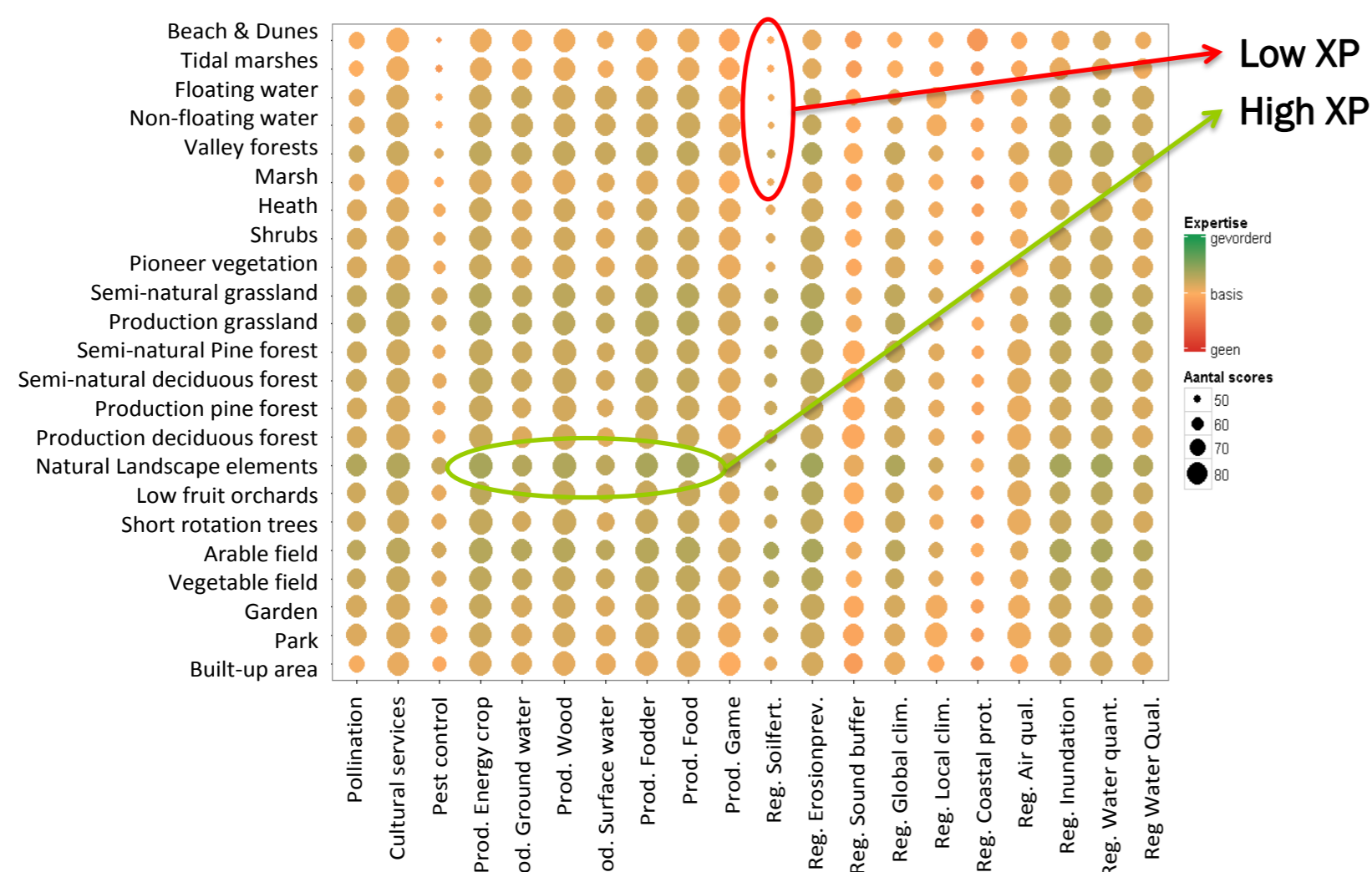


# The Matrix reloaded - Expert based valuing of ES Capacity in Flanders

## 0. Context: the Flanders Ecosystem Assessment

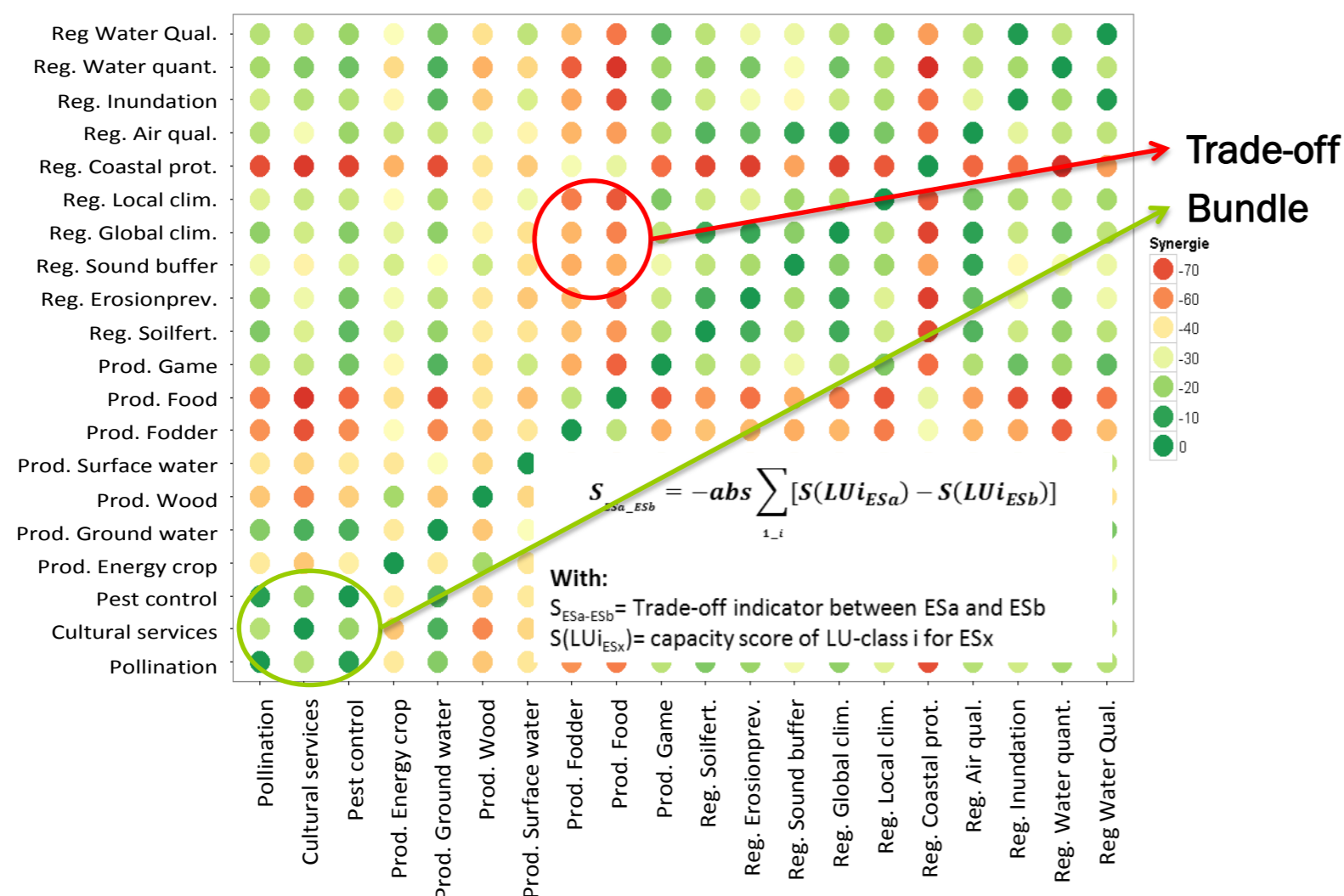
The Research Institute for Nature and Forest (INBO) conducts research and supports policy and other stakeholders on conservation, restoration and sustainable use of nature. Every two years the Nature Report evaluates the status of nature in Flanders (Northern part of Belgium). The next Nature Report (2014) will assess ecosystems and their services (ES) in Flanders. As a first exploration, a semi-quantitative scoring exercise was conducted.

## 1. Inventory of local ES expertise



105 respondents scored their expertise per ES and per LU  
**0 (no experience) / 1 (basic xp) / 2 (specialized xp).**  
 Number of scores (point size) and average xp (color) determine available expertise over ES and LU.

## 2. Bundles and trade-offs between ES



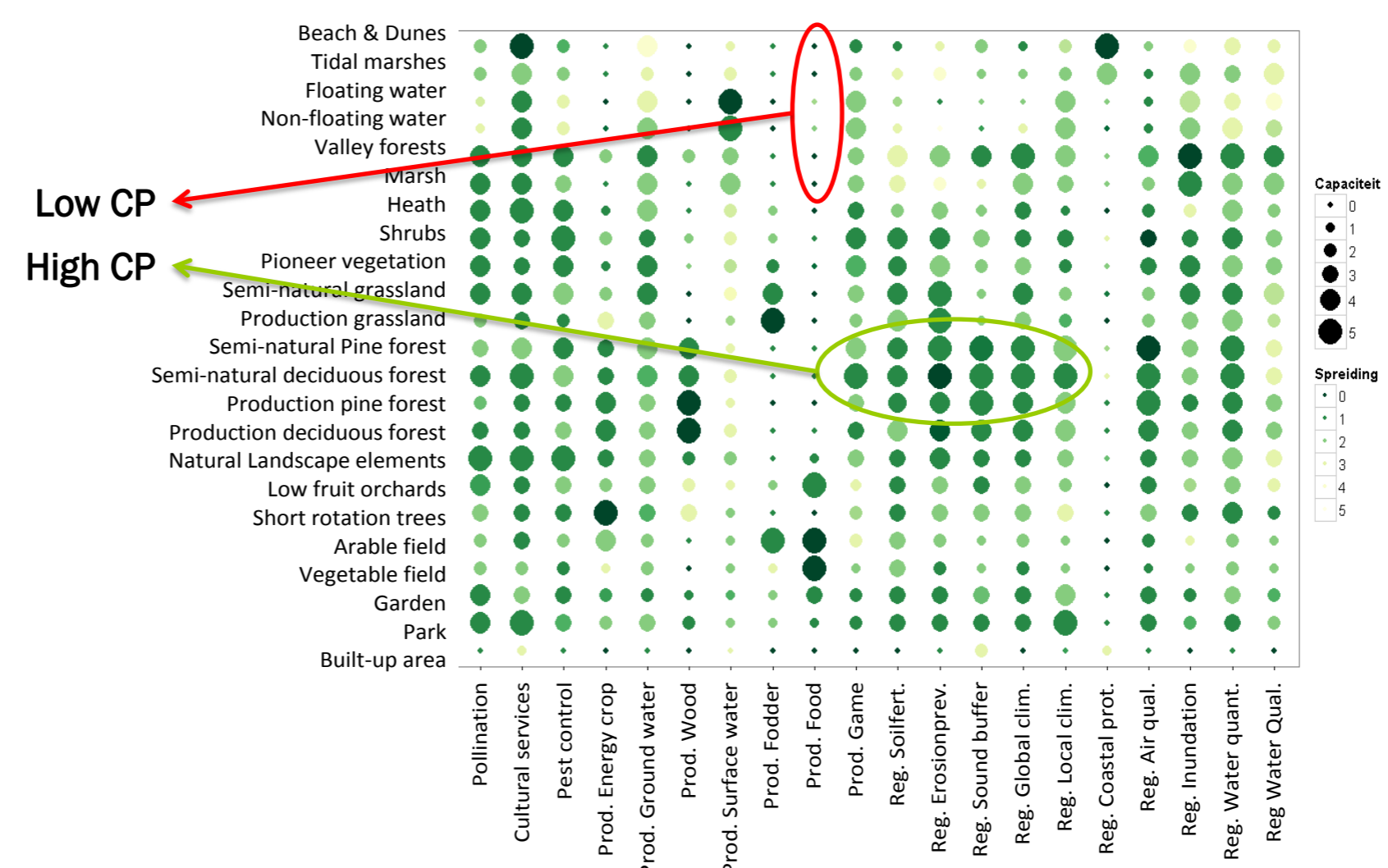
Similarity in supply over LU-classes shows potential trade-offs and synergies between ES. Also, LU conversion impacts on potential ES bundle supply were derived (not shown).

## 3. Survey reliability

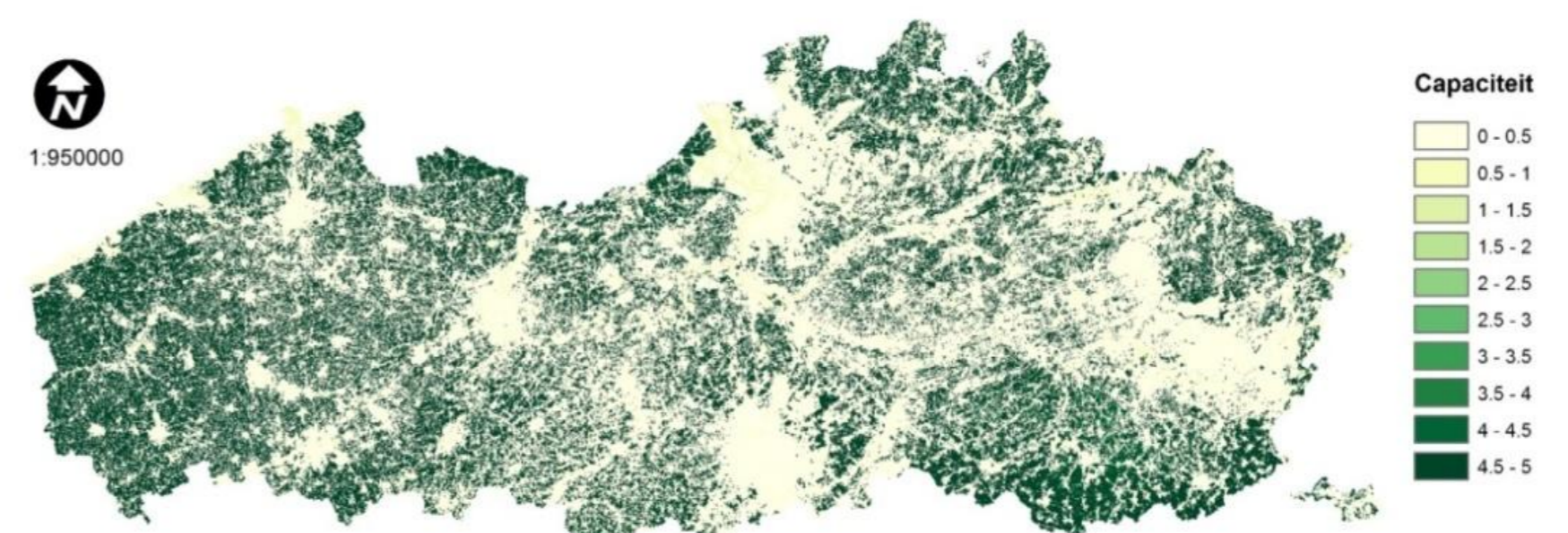
Transparency, confidence and consistence statistics are widely ignored minimum requirements for survey reporting. Although the number of respondents in our survey is larger than in published ES-surveys and expertise levels are sufficiently high, **statistical reliability is still too low** to base societal decisions on these data.

(further details in presentation at the *Mapping and Visualisation workshop*, Tuesday at 16:05 Ballroom A)

## 4. Mapping ES delivery capacity



Respondents scored the capacity for ES supply per LU.  
**0 (no capacity) / 1 (lowest cp) / 2 (low cp) / 3 (average cp) / 4 (high cp) / 5 (highest cp)**  
 LU classes considered 'according to current practice'  
 Median score (size), 25 to 75 percentiles range (color)



Food production



Water quality regulation



Cultural services

## 5. Next steps

- Increasing reliability by Delphi-methods
- Cross-validation with biophysical mapping methods