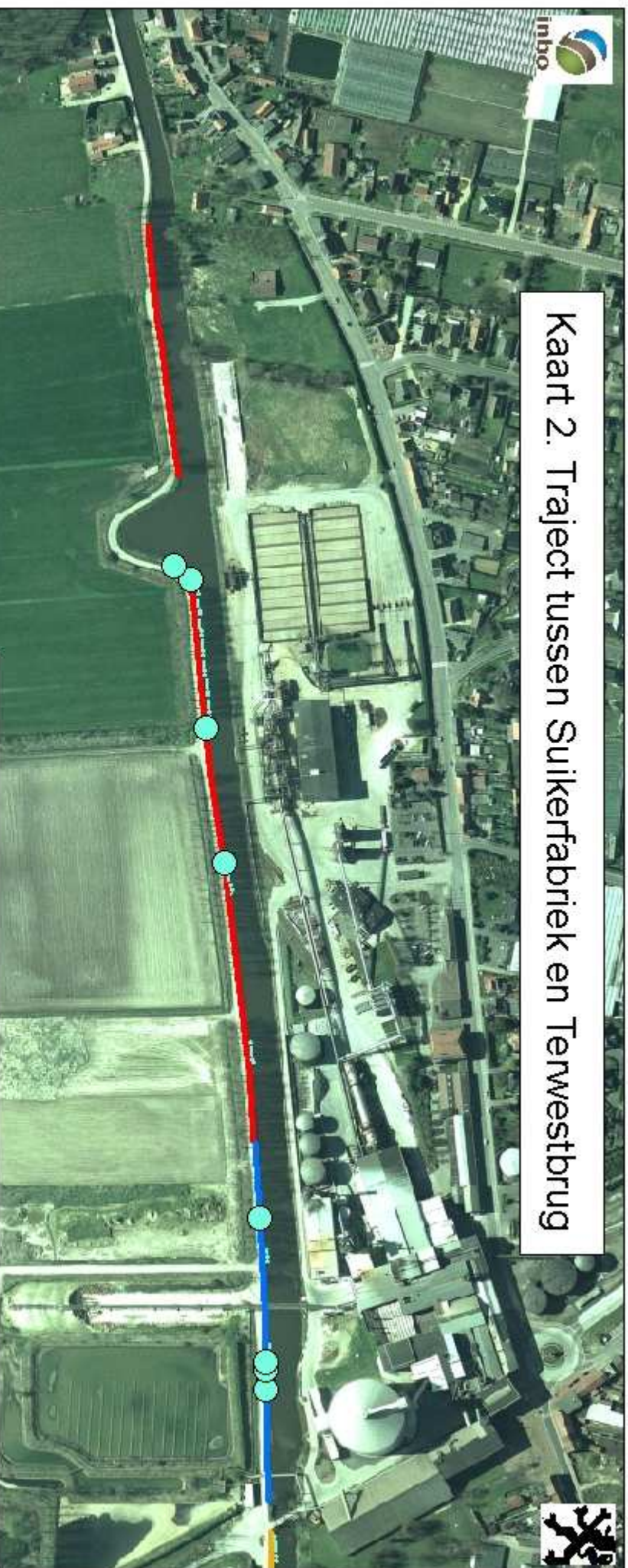





## Kaart 2. Traject tussen Suikerfabriek en Terwestbrug









### Aanwezigheid van exoten langs de Moervaart in de periode 2005/2006

-  Japanse duizendknoop
-  Grote watermawel

 nieuwe haarden Grote watermawel

#### NTMB Moervaart

##### type

-  in constructie
-  kokosrollen op oever
-  kokosrollen op schanskorven
-  palen met wiepen zonder plasbermen
-  plasberm met kokosrollen
-  plasberm zonder kokosrollen

