

Report on the main results of the surveillance under article 11 for annex II, IV and V species (Annex B)

SPECIES NAME: **Leucobryum glaucum**

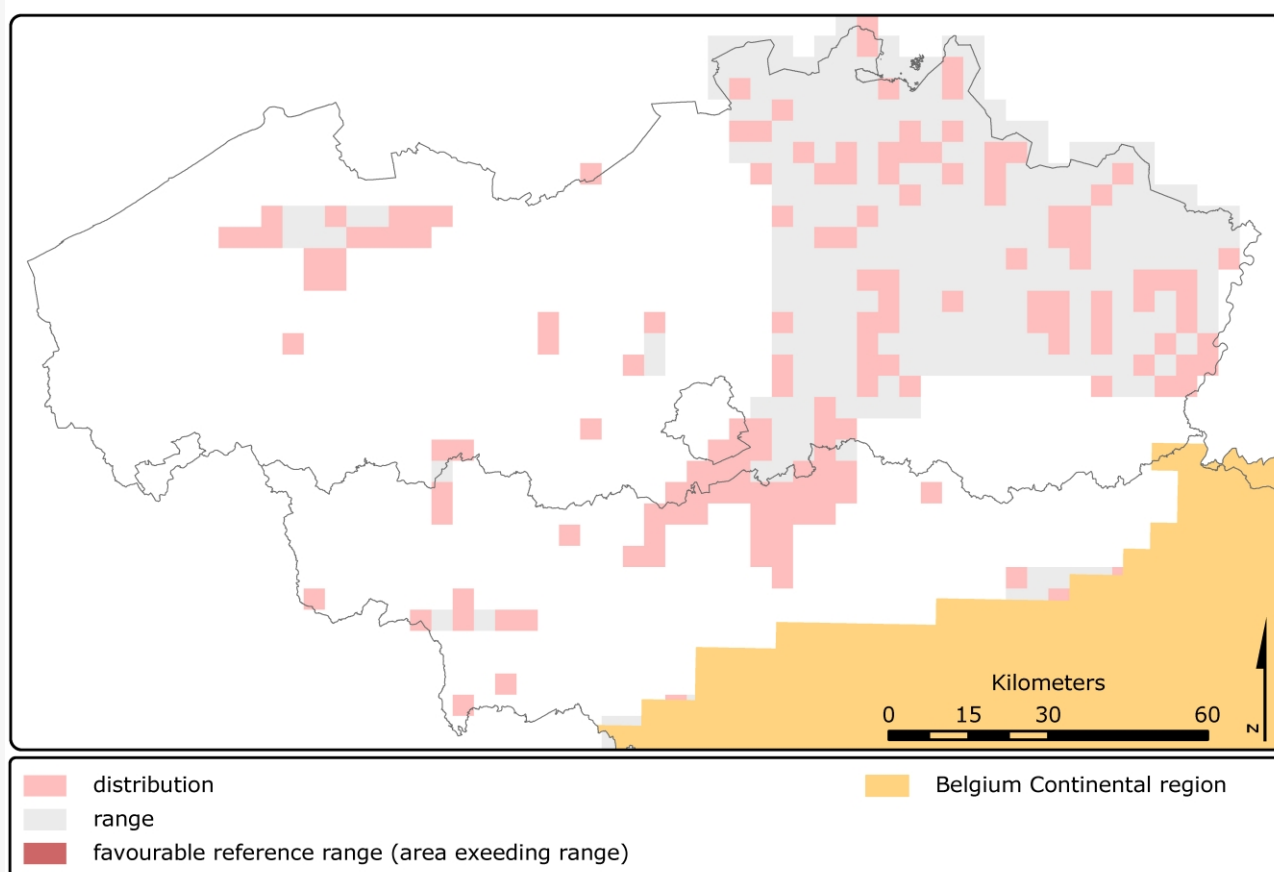
1. National level

Biogeographic regions and/or marine regions concerned in the MS: **ATL CON**

2. Biogeographical or marine level

2.1 Biogeographical region or marine region: Atlantic

Van Landuyt W. (2008) Conservation status of the Natura 2000 species White cushion moss (*Leucobryum glaucum*) for the Belgian Atlantic region, In: Paelinckx D., Van Landuyt W. & De Bruyn L. (ed.). Conservation status of the Natura 2000 habitats and species. Report of the Research Institute for Nature and Forest, INBO.R.2008.15. Brussels. In prep



2.2 Published sources and/or websites | <http://www.inbo.be/natura2000be>

2.3 Range of species in the biogeographic region or marine region

2.3.1 Surface range of the species in km ²	6576
2.3.2 Date of range determination	1980-2006
2.3.3 Quality of data concerning range	Moderate e.g. based on partial data with some extrapolation
2.3.4 Range trend	Stable (=)

2.3.5 Range trend magnitude (km2) - optional	N/A
2.3.6 Range trend period	1994-2006
2.3.7 Reasons for reported trend	Unknown
Other (specify)	N/A

2.4 Population of the species in the biogeographic region or marine region

2.4.1 Population size estimation

Minimum population	Maximum population	Population units
151	151	Grids

2.4.2 Date of population estimation	1980-2006
-------------------------------------	-----------

2.4.3 Method used for population estimation	From comprehensive inventory
---	------------------------------

2.4.4 Quality of population data	Moderate e.g. based on partial data with some extrapolation
----------------------------------	---

2.4.5 Population trend	Decreasing (-)
------------------------	----------------

2.4.6 Population trend magnitude	N/A
----------------------------------	-----

2.4.7 Population trend period	1994-2006
-------------------------------	-----------

2.4.8 Reasons for reported trend	Direct human influence (restoration, deterioration, destruction)
----------------------------------	--

Other (specify)	N/A
-----------------	-----

2.4.9 Justification of % thresholds for trends (optional)	N/A
---	-----

2.4.10 Main pressures	160 General Forestry management 163 - forest replanting 164 - forestry clearance 251 - pillaging of floristic stations 622 - walking, horseriding and non-motorised vehicles 702 - air pollution 720 Trampling, overuse 952 - eutrophication 953 - acidification 971 - competition
-----------------------	---

2.4.11 Threats	160 General Forestry management 163 - forest replanting 164 - forestry clearance 251 - pillaging of floristic stations 622 - walking, horseriding and non-motorised vehicles 702 - air pollution 720 Trampling, overuse 952 - eutrophication 953 - acidification
----------------	--

2.5 Habitat for the species in the biogeographic region or marine region

2.5.1 Habitats for the species	9120 Atlantic acidophilous beech forests with Ilex and sometimes also Taxus in the shrublayer (Quercinion robori-petraeae or Ilici-Fagenion)
--------------------------------	--

2.5.2 Area estimation (km2)	324
-----------------------------	-----

2.5.3 Date of estimation	1994-2006
--------------------------	-----------

2.5.4 Quality of the data	Good e.g based on extensive surveys
---------------------------	-------------------------------------

2.5.5 Trend of the habitat	Stable (=)
----------------------------	------------

2.5.6 Trend period	1994-2006
--------------------	-----------

2.5.7 Reasons for reported trend	Unknown
----------------------------------	---------

Other (specify)	N/A
-----------------	-----

2.6 Future prospects for the species	Poor prospects - species likely to struggle unless conditions
--------------------------------------	---

	change
--	--------

2.7 Complementary information

2.7.1 Favourable reference range (km ²)	6496
---	------

2.7.2 Favourable reference population	137
---------------------------------------	-----

2.7.3 Suitable habitat for the species	324
--	-----

2.7.4 Other relevant information	N/A
----------------------------------	-----

Conclusion	Biogeographical or marine level	Conclusions within Natura 2000 sites (optional)
-------------------	--	--

(2.3) Range	Favourable (FV)	N/A
-------------	-----------------	-----

(2.4) Population	Favourable (FV)	N/A
------------------	-----------------	-----

(2.5) Habitat for the species	Inadequate (U1)	N/A
-------------------------------	-----------------	-----

(2.6) Future prospects	Inadequate (U1)	N/A
------------------------	-----------------	-----

Overall assessment	Inadequate (U1)	N/A
--------------------	-----------------	-----