

# Report on the main results of the surveillance under article 11 for annex II, IV and V species (Annex B)

SPECIES NAME: **Leucorrhinia pectoralis**

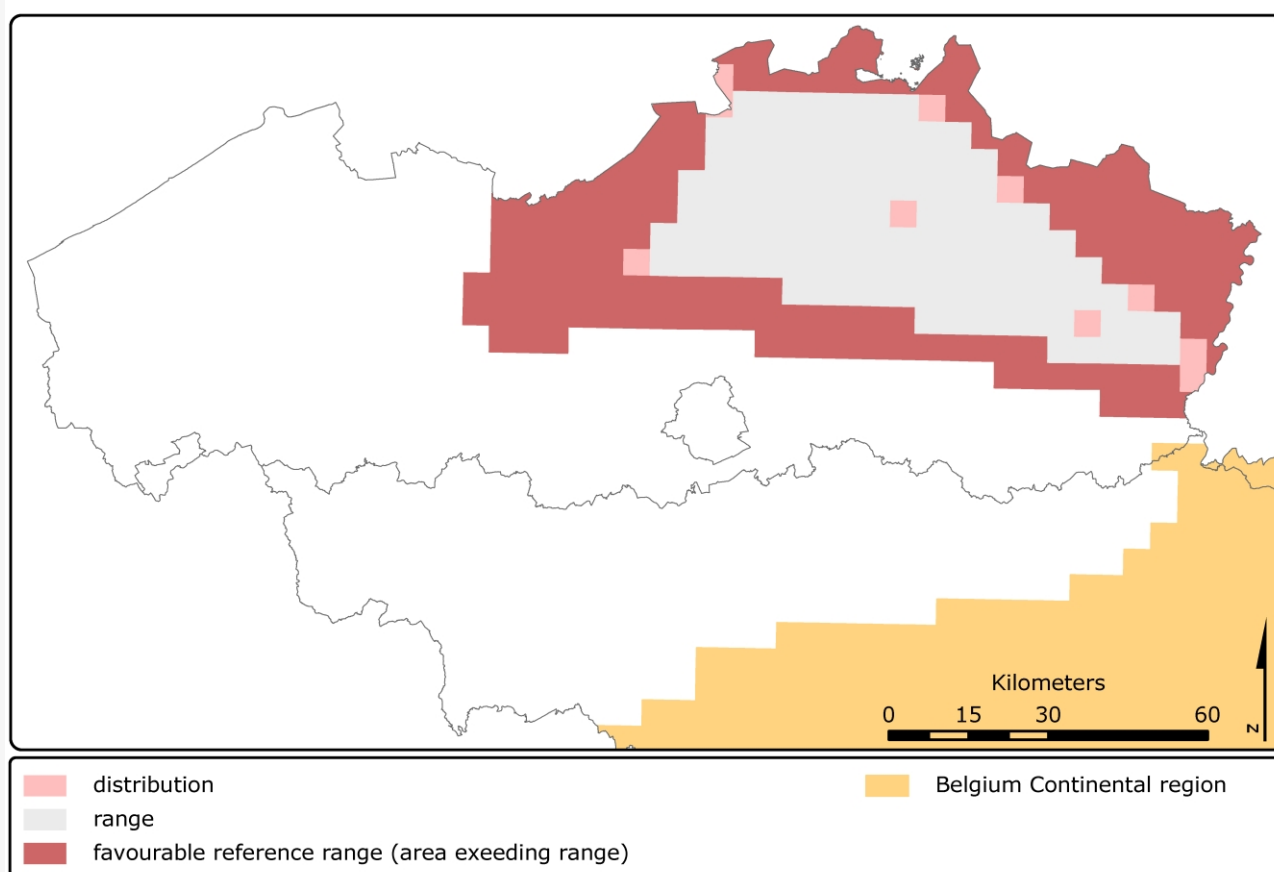
## 1. National level

Biogeographic regions and/or marine regions concerned in the MS: **ATL**

## 2. Biogeographical or marine level

### 2.1 Biogeographical region or marine region: Atlantic

De Knijf G. (2008) Conservation status of the Natura 2000 species Large White-faced Darter (*Leucorrhinia pectoralis*) for the Belgian Atlantic region, In: Paelinckx D., Van Landuyt W. & De Bruyn L. (ed.). Conservation status of the Natura 2000 habitats and species. Report of the Research Institute for Nature and Forest, INBO.R.2008.15. Brussels. In prep



#### 2.2 Published sources and/or websites

De Knijf, G., Anselin, A., Goffart, P. & Tailly, M. (eds.), 2006. De libellen (Odonata) van België: verspreiding - evolutie - habitats. Libellenwerkgroep Gomphus ism Instituut voor Natuur- en Bosonderzoek, Brussel. 368 pp. [www.inbo.be/natura2000be](http://www.inbo.be/natura2000be)

### 2.3 Range of species in the biogeographic region or marine region

2.3.1 Surface range of the species in km<sup>2</sup> 2960

2.3.2 Date of range determination 2000-2006

2.3.3 Quality of data concerning range	Good e.g based on extensive surveys
2.3.4 Range trend	Stable (=)
2.3.5 Range trend magnitude (km <sup>2</sup> ) - optional	0
2.3.6 Range trend period	1994-2006
2.3.7 Reasons for reported trend	Unknown Improved knowledge/more accurate data
Other (specify)	N/A

## 2.4 Population of the species in the biogeographic region or marine region

2.4.1 Population size estimation		
Minimum population	Maximum population	Population units
10	10	Grids
2.4.2 Date of population estimation	2000-2006	
2.4.3 Method used for population estimation	Based on expert opinion	
2.4.4 Quality of population data	Poor e.g. based on very incomplete data or on expert judgement	
2.4.5 Population trend	Stable (=)	
2.4.6 Population trend magnitude	0	
2.4.7 Population trend period	2000-2006	
2.4.8 Reasons for reported trend	Unknown Improved knowledge/more accurate data	
Other (specify)	N/A	
2.4.9 Justification of % thresholds for trends (optional)	N/A	
2.4.10 Main pressures	701 - water pollution 803 - infilling of ditches, dykes, ponds, pools, marshes or pits 810 Drainage 811 - management of aquatic and bank vegetation for drainage purposes 853 - management of water levels 910 Silting up 952 - eutrophication	
2.4.11 Threats	701 - water pollution 810 Drainage 811 - management of aquatic and bank vegetation for drainage purposes 853 - management of water levels 910 Silting up 952 - eutrophication	

## 2.5 Habitat for the species in the biogeographic region or marine region

2.5.1 Habitats for the species	Moderately rich ponds, and moderately acid fens
2.5.2 Area estimation (km <sup>2</sup> )	N/A
2.5.3 Date of estimation	2006
2.5.4 Quality of the data	Poor e.g. based on very incomplete data or on expert judgement
2.5.5 Trend of the habitat	Stable (=)
2.5.6 Trend period	1994-2006
2.5.7 Reasons for reported trend	Unknown Improved knowledge/more accurate data
Other (specify)	N/A
2.6 Future prospects for the species	Poor prospects - species likely to struggle unless conditions

	change
--	--------

## 2.7 Complementary information

2.7.1 Favourable reference range (km <sup>2</sup> )	5844	
2.7.2 Favourable reference population	Much more than field 2.4.1 10	
2.7.3 Suitable habitat for the species	N/A	
2.7.4 Other relevant information	N/A	
<b>Conclusion</b>	<b>Biogeographical or marine level</b>	<b>Conclusions within Natura 2000 sites (optional)</b>
(2.3) Range	Bad (U2)	N/A
(2.4) Population	Bad (U2)	N/A
(2.5) Habitat for the species	Unknown (XX)	N/A
(2.6) Future prospects	Inadequate (U1)	N/A
Overall assessment	Bad (U2)	N/A