

# Roadmap to an Information & Data Center

Bart Goossens & Dimitri Brosens  
Research Institute for Nature & Forest  
Kliniekstraat 25  
1070 Brussels

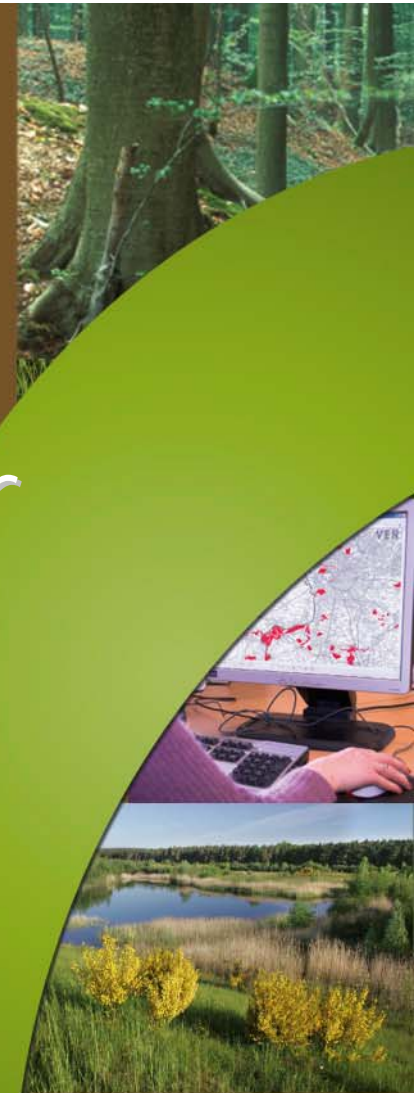


**inbo**

Instituut voor Natuur- en Bosonderzoek  
*Research Institute for Nature and Forest*



[www.inbo.be](http://www.inbo.be)



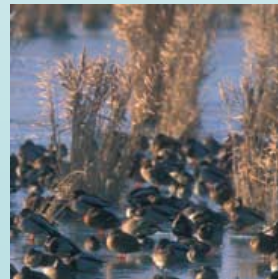
- Introduction to INBO
- The information & data center (IDC)
  - Goals
  - Structure & Roles
  - Benefits
  - How?
  - First Actions
  - Data Input
  - Perspectives
  - Issues

# Introduction to INBO

- INBO is the Flemish research and knowledge center for nature and forest, and its sustainable management and use
- INBO conducts research in support of policy makers
- INBO provides biodiversity data to any user

# INBO: Branches

- Brussels
- Geraardsbergen
- Grimminge
- Groenendaal
- Linkebeek



# INBO: Organisation

- INBO, an organisation on the move
  - 1 April 2006: merge of Institute of Nature Conservation (IN) and Institute for Forestry and Game Management (IBW)
  - 1 November 2007: new administrator-general (Dr. Jurgen Tack)
  - 1 January 2009: new organisational structure

# INBO: Strategic Goals

- 6 Institutional goals
- 6 Scientific goals concerning:
  - biodiversity and the natural environment
  - research into the management and sustainable use of biodiversity

# INBO: Institutional Goals

- INBO

1. is a high-performance institution
2. coordinates nature and forest research
3. provides scientific advice
4. reports on the situation of nature and forest and appraises policy
5. disseminates the results of its research activities
- 6. manages and discloses data on nature and forest**

# INBO IDC: Operational Goals

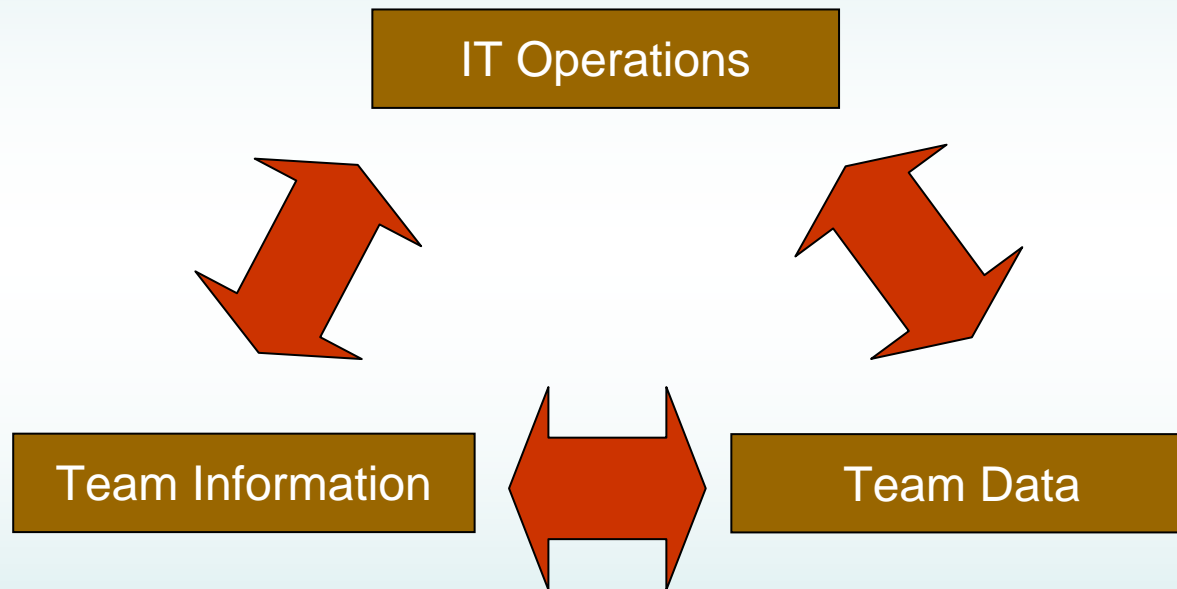
- Quality control of data collections
- Centralization and archiving of reliable data
- Documentation & structuring of available data
- Integration of distributed data in the frame of global analyses
- Disclosure of data to INBO users and beyond



# INBO: Structure

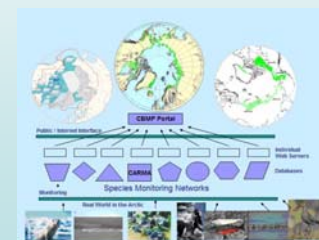


# INBO IDC: Structure & Roles



# INBO IDC: Benefits

- Total integration of the digital library & data section
  - Creating a portal to reliable information
  - linking between different data types
    - Data sets, publications, persons...
  - Resource for integrated data analysis
    - Writing reports & scientific publications
    - Distribution mapping & modelling

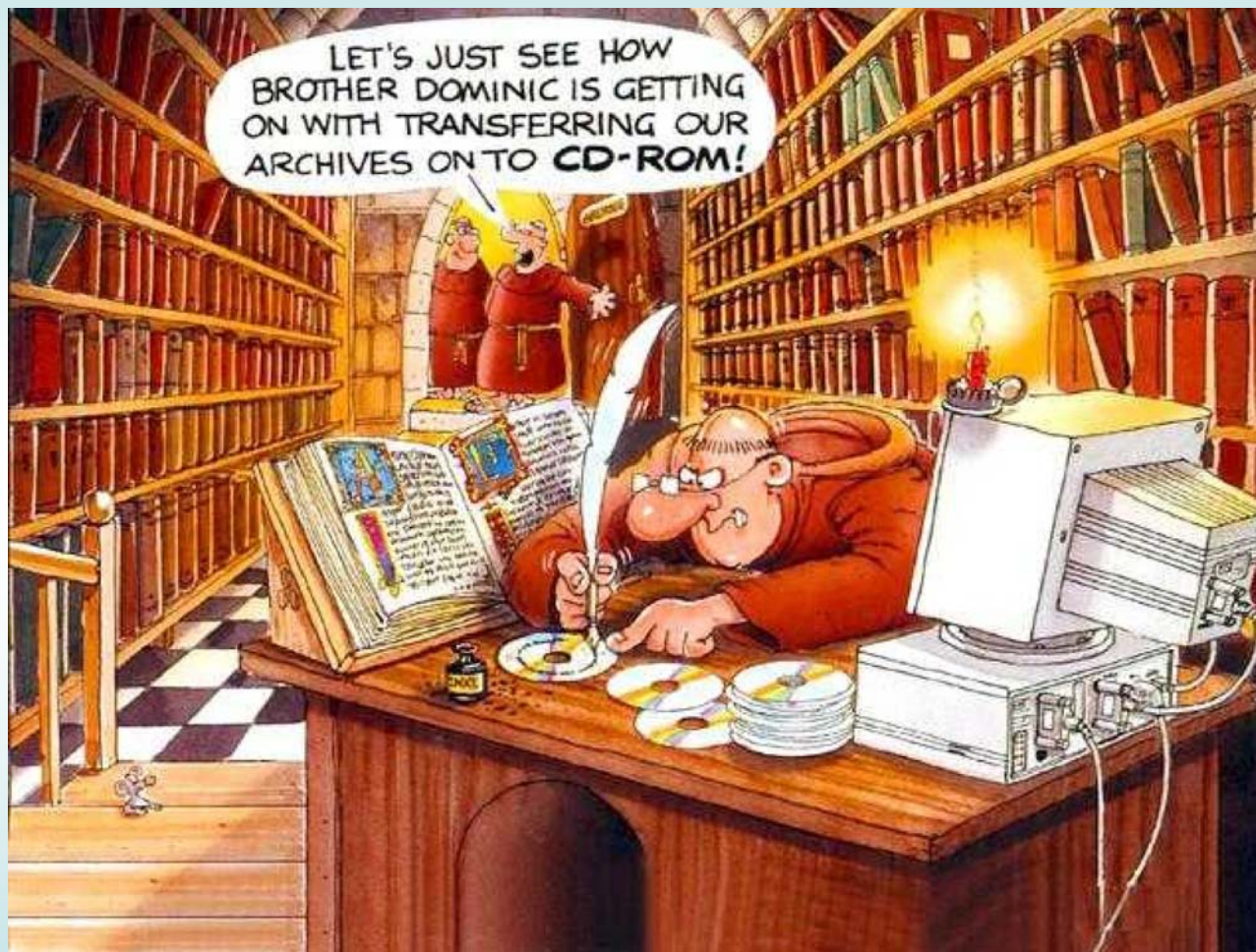


# INBO IDC: Opportunities

- Quantify & visualize biodiversity research in Flanders
- Implementation of international conventions and European directives
- Important role on the regional and European level for future initiatives & research
  - Develop future scientific programmes



# INBO IDC: How?



# INBO IDC: Preproject Stage

What are the needs, what do we want, where do we want to go with the data center, what does exist, what can we use... what can we develop, what do we buy. And what do we have....and where can we find it! Who will do what... and what is the timeline...

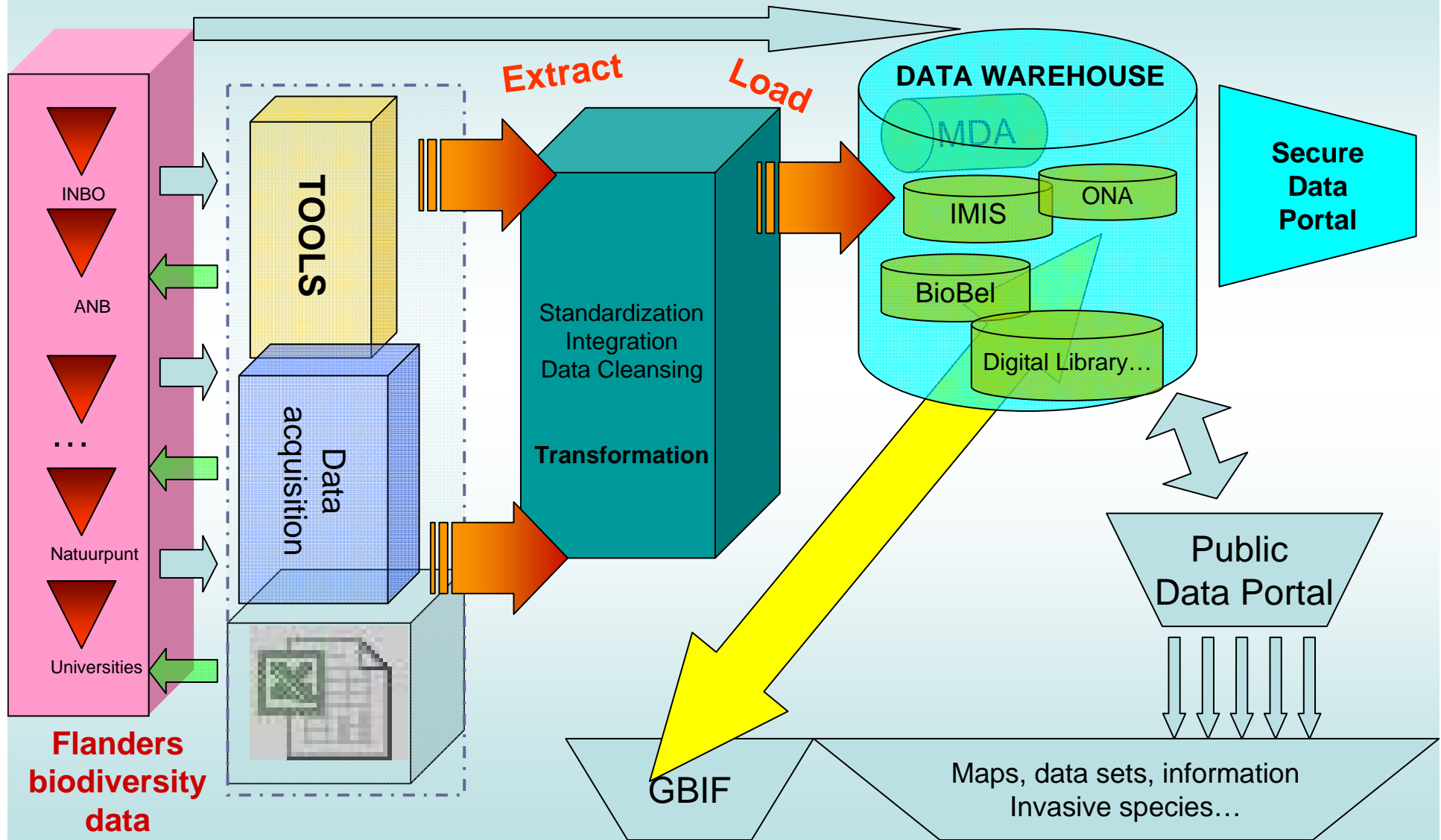




# INBO IDC: Project Stage

- Integrated Architecture of the IDC
  - Library & information systems (IMIS), archiving structures (MDA), data systems, web services,... will be integrated in one data portal.
- Authorisation and authentication
  - INBO and partners Side
  - Public Side

# INBO IDC: How?



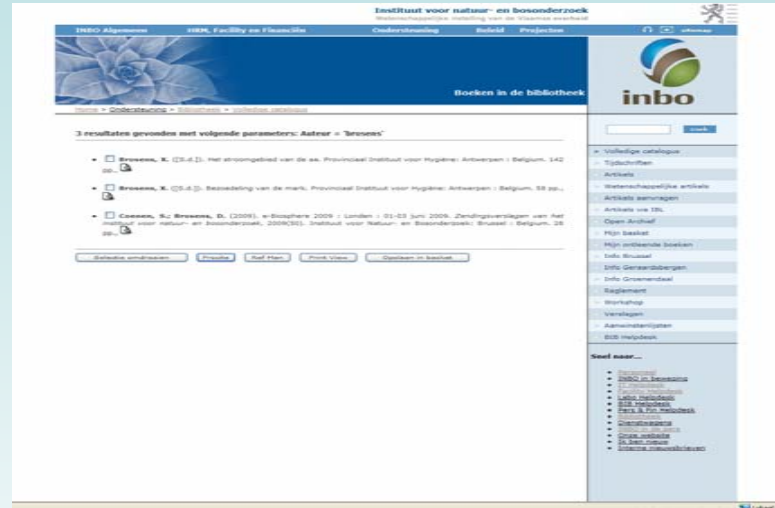


# INBO IDC: First Actions

- Metadata & data standards
- Implementation of reference data!
- Development & implementation of an **internal data policy**
- Description of the data sets
- Adaption of IT applications (VLIZ + INBO)
- Validation of the data sets
- Development and implementation of a data policy for **external data providers**

# INBO IDC: Data Input

- Publications
- Persons
- Institutions
- Projects
- Events



- Taxonomic species reference list (terrestrial & freshwater)
- Flanders biodiversity data and other data sets

# INBO IDC: Data Input

- Biodiversity data, where to start?
  - Species list
  - Universities, Institutions...
  - GBIF
  - INBO
    - 80 % of the Biodiversity data in Flanders is in one way or another related to the INBO
    - Which data sets?
      - » Invasive species, Red list species?



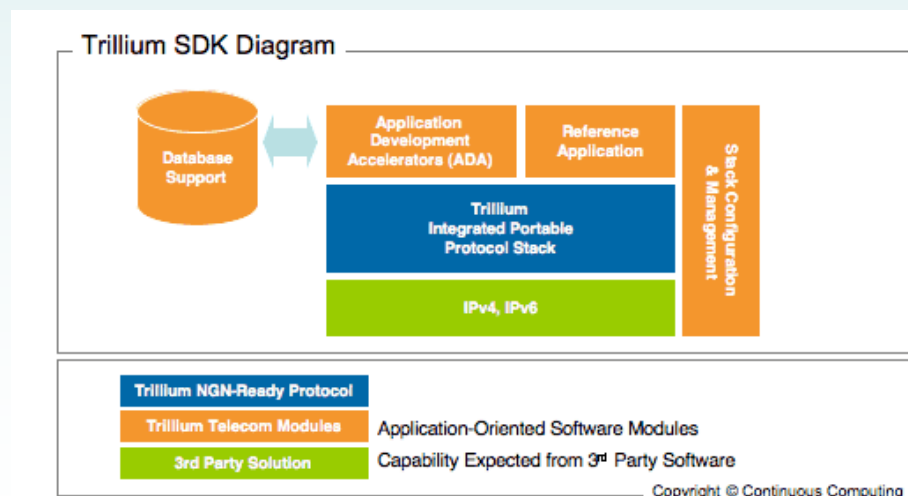
# INBO IDC: Data Input

- Which data sets
  - Unknown data sets
    - All the hidden data sets on a system or network
  - Known Data sets
    - Regularly updated data sets or databases
    - Digitized vs. not digitized data



# INBO IDC: Data Input

- The quest for unknown data sets
  - In need of a tool capable of searching and indexing the INBO network
    - Google Search Appliance enhanced with VLC software (promising)
    - TRillium software (promising)
    - On hold
  - Backtracking



# INBO IDC: Data Input

- The quest for known undigitized Data sets
  - Digitisation projects
    - Belgian Biodiversity Platform digitization call '09
      - Florabank
      - Dipol2 project
      - Beetle project



# INBO IDC: Data Input

- The quest for known data sets
  - Data archaeology
    - Digging in the past of the institute
      - Publications
      - Interview
      - > Time consuming but worthwhile
        - » **Living data sets and describing them**
    - IPT or IMIS as a tool for describing data sets

# INBO IDC: perspectives

- Improve research quality in Flanders and around the globe
- Possibility to study biodiversity with an holistic view!
- Data is centralized and safe
- Possibility to compare old & new data,
- Saving time & money in research!
- Possible to compare the same species from different regions
- Discover migratory patterns out different data sets.
- Discover species interactions
- Possibility to make better bio-geographical models
- ...

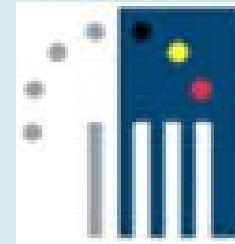


# INBO IDC: Issues

- All your data are belong to us!
  - Contacts, contracts...
  - Data ownership
  - Protocols
  - Housekeeping
  - Data policy
  - Belgian Databases



# INBO IDC: Partners



# INBO Data & Information

Thank you for your attention!

Questions?

[Dimitri.brosens@INBO.be](mailto:Dimitri.brosens@INBO.be)

[Bart.goossens@INBO.be](mailto:Bart.goossens@INBO.be)