



Amphibian translocations in Flanders, Belgium

Loïc van Doorn^{1*}, Jeroen Speybroeck¹, Johan Auwerx¹, Joachim Mergeay¹, Lily Gora², Johan Toebat²

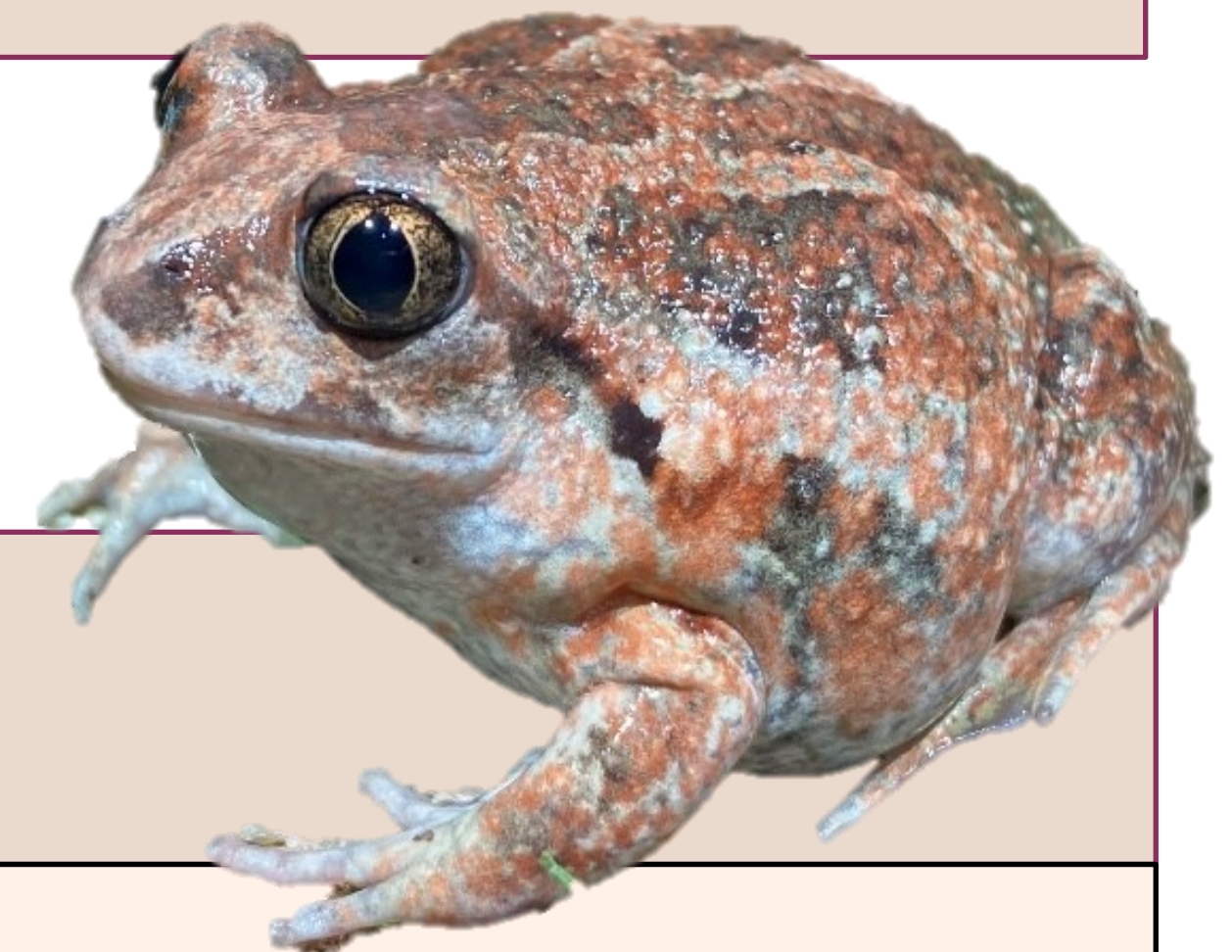
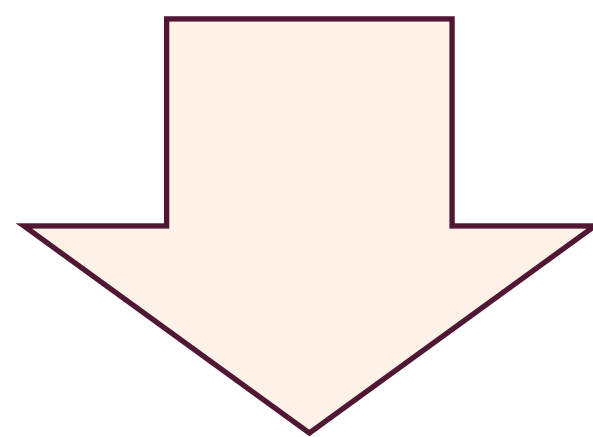
* loic.vandoorn@inbo.be

¹ Research Institute for Nature and Forest, Havenlaan 88, B-1000, Brussels, Belgium

² Agency for Nature and Forests, Havenlaan 88, B-1000 Brussels, Belgium

LIFE Belgium for Biodiversity

- **Protect and restore biodiversity in Belgium**
 - 14 partners
 - Prioritized action framework



Translocation

Common midwife toad

Alytes obstetricans

Captive breeding

- 6 genetic groups (BE:5 + NL:1)
- +- 10.000 juveniles/year

Translocation: since 2021

- Reintroduction + restocking
- Genetic mix
- Min. three consecutive years

Common spadefoot toad

Pelobates fuscus

Captive breeding and headstarting

- 6 genetic groups (BE:2 + NL:3 + GE:1)
- +- 20.000 juveniles/year

Translocation: since 2020

- Reintroduction + restocking
- Genetic mix
- Min. four consecutive years

Preliminary results

- Start: 6 pop.

- Restocking: 4 pop.
- Reintroduction: 4 pop.

Long-term management

Monitoring

Preliminary results

- Start: 2 pop.

- Restocking: 2 pop.
- Reintroduction: 3 pop.

Policy

Translocation

Habitat restoration

